



# CLM

CALIFORNIA  
LIVING MUSEUM

Campus Master Plan  
June 2022

This page intentionally left blank

Planning Participants

California Living Museum\*

Meg Maitland, *Director*  
Sharon Adams, *Curator of Animals*  
Lana Fain, *Zoo Manager*

Kern County Superintendent of Schools

Steve Sanders, *Chief of Staff*  
Amanda Frank, *Kern Education Pledge Coordinator*

CALM Foundation

Russ Bigler, *Chair*  
Kevin Bartl  
Kathryn Mears

CLR Design

Gregg Leicester, *Principal*  
Megan Clermont, *Designer*  
Nicolette Wojtak, *Architect*

\* Additional CALM Staff and Foundation members participated in select workshops throughout the planning process, providing valuable input on the overall assessment of the CALM campus, identifying key existing assets, defining future vision objectives, and developing concepts for select future capital projects.

Table of Contents

4 Foreword

Introduction

6 Overview & Planning Process  
7 Master Plan Drivers & Conceptual Framework  
8 Existing Campus  
9 Existing Campus - Site Images & Analysis  
10 Campus Master Plan

Master Plan Overview

12 Project Zones  
13 Entry Plaza  
14 Entry Plaza - Conceptual Rendering  
15 Education Building Enhancements  
16 Rehabilitation & Animal Operations Hub  
17 Rehabilitation & Animal Operations Hub - Conceptual Rendering  
18 Legacy Campus  
20 Legacy Campus Animals  
21 West Expansion  
23 West Expansion - Conceptual Rendering  
24 West Expansion Animals  
25 Event Pavilion  
26 Event Arrival Gardens Plants  
27 North Meadow Habitat  
28 North Meadow Animals

Implementation

31 Implementation Overview  
32 0-7 Years  
33 8-15 Years  
34 16-20 Years

Appendix

36 State & Local Context  
37 CALM Site  
38 Inventory & Analysis - Site Topography  
39 Inventory & Analysis - Existing Conditions Plan  
40 Inventory & Analysis - Circulation  
41 Inventory & Analysis - Habitat Land Use  
42 Inventory & Analysis - Current Collection Plan  
42 Ecoregional Representation

# Foreword

Since 1983, the California Living Museum (CALM) has grown from a grassroots effort to a beloved, accredited zoological facility that brings California wildlife and conservation to the forefront of the Kern County community. Acting as both a wildlife rehabilitation center and zoo, CALM exists to educate the public on the amazing flora and fauna that thrives in California.

One of the only zoological facilities operated by a County Office of Education, CALM works hand in hand with the Kern County Superintendent of Schools to educate students and adults alike; currently hosting over 20,000 students annually through our doors on school field trips. In collaboration with the CALM Foundation, we inspire guests to look at wildlife with new perspectives and intentions. It is our hope that we motivate each visitor to help make a personal commitment to the betterment of our planet.

As CALM expands and embraces new techniques and practices in animal care and husbandry, we will continue to not only create new animal-centered guest experiences but make renovations to older on-site facilities. The following Master Plan acts as a blueprint to make those dreams a reality.

With the support of our amazing community, CALM will offer expansive aid to wildlife and a top-notch experience for every guest who comes through our doors. With community, conservation and commitment in mind, CALM intends to utilize this Master Plan to create a facility that leaves an imprint on visitors that lasts a lifetime.

Thank you for your continued support in our efforts,

**Meg Maitland**

Director, CALM

*Help Us Help Wildlife*



# Introduction



# Overview & Planning Process

This report presents a conceptual plan for how the California Living Museum can be developed over the next 15 years. Concepts for the various project zones are backed by both “mission” drivers, such as showcasing California wildlife and bolstering CALM’s rescue and rehab program, as well as “site” drivers through the utilization of the site’s unique bluffs and rolling hills.

Led by CLR Design (CLR), a series of three interactive workshops gave the Zoo’s executive team, Board of Directors, and staff an opportunity to think critically and creatively about campus-wide needs, big picture vision and the role that the Zoo will play as a regional attraction. This seven-month process began in September 2021 with an initial workshop to understand the needs and goals of the Zoo. Successive workshops focused on concept testing by way of plans, sketches, imagery, and narratives to thoroughly vet ideas. CLR presented these concepts to the workshop participants, documented feedback, and refined ideas for preparation of the final Master Plan Booklet in the Summer of 2022.

During the first Workshop, the Planning Team identified the following Mission Strengths and Site Attributes, that helped inform the direction of the Campus Plan:

### Mission Strengths

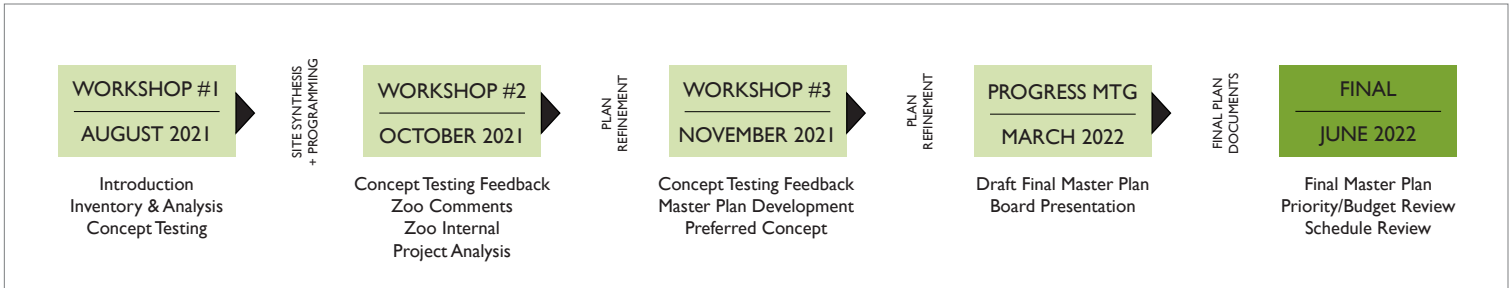
- Commitment to education and conservation (especially local/CA species)
- Community asset
- Operational support from City
- Motivated Board – desire to grow and improve as an institution
- Rescue, Rehab and Release program
- Offer unique more intimate experience (different than the larger LA and San Diego Zoos)

### Site Strengths

- Land rich – developed core with large potential expansion zones east and west
- Beautiful Kern River edge setting and foothills backdrop
- Mature trees at core of campus
- New train ride and mining town settlement attraction
- Nice collection of animals mainly focused on North America
- Parking for guests – plenty of space
- New mountain lion habitat is more representative of desired exhibit type in the future – spacious, natural geology, streams and pool, shade, more modern holding, etc.

### Site Challenges

- Somewhat removed from downtown Bakersfield with few other draws this end of town (minimal lunch spots, minimal shopping, no other attractions, etc.)
- Parking – plenty of area but need better surfacing and shade
- No sense of arrival, flow from parking to core could be improved
- Exhibits – smaller existing habitats with aging containment and facilities, somewhat static and could be more interactive for guests and the animals, too much chain-link and hard materials in sight-lines
- Education program is critical but need better venues and more staff to meet goals
- Bear and Bighorn Sheep Habitats could be improved for these stars of CALM
- Rescue and Rehab program is an asset to the community and CALM but needs dedicated entry and likely additional support space, i.e. yards with shade



# Master Plan Drivers & Conceptual Framework

Through the workshop process, several key drivers and priorities for CALM's master plan began to emerge:

## "I've Never Seen California Like This"

Rather than try to expand CALM's animal collection to more exotic animals that may not be well-suited to central California's environment, the decision was made to continue to showcase Californian ecology, but with a level of focus and intention that more comprehensive institutions are unable to provide.

### Expand and Improve Wildlife Rehabilitation Program

As the only wildlife rehabilitation center in the Bakersfield area, CALM's rehab program plays an important role and the consensus was to make the program bigger, better, and more prominent. By highlighting the incredible work the CALM's wildlife rehab program accomplishes, the Zoo's contributions and actions towards conservation.



Tule Elk



Adventure Education Concept

### Expanded Animal Land Use and Mixed Species Habitats

Opportunity to provide more enriching habitats with more comprehensive environmental transects through a particular region of CA, such as desert, montane, riverine, coastal, etc.

### Flow

The existing campus has been developed somewhat haphazardly over the last several decades. Overall facility master plans have been developed but there's a lack of consistency with implementation and execution of projects and programs. Test new circulation systems with hierarchy including a new primary path, secondary and tertiary trails the loop back to key hubs. Look for opportunities to create dedicated perimeter service roads.

### Arrival Experience

CALM offers a lot upon entry, however the core parking area, drop-of zone, and flow from a primary gathering area to the core of the campus lacks some very basic geometries that will allow for better circulation for everyday guests as well as busy school group days and events. These enhancements envisioned can help with stay time, earned revenue at the gate, and guest satisfaction overall (return visitation, membership sales, etc.).

### Hubs

Review opportunities to create strategic zones throughout the campus that "stack" several components such as shade, food and beverage, guest comfort (restrooms, seating, misters, etc.), views of animals and landscapes, and ideally, secondary/tertiary loop back trails so each hub is utilized multiple times. This could be a key consideration if the campus were to grow over time – expanding in to the west and east lots.

### Flex Habitats

Not only can mixed species habitats allow for more enriching environments for guests, animals and staff, but the ability to link spaces (flex habitats) for animals with somewhat comparable holding requirements can open up an entirely new layer of circulation and utilization. Animals will have more space to explore and search, longer corridors to trek and track. It can all be planned in a compelling way and even choreographed from day to day so there's much more animal movement and interaction for guests.

### Campus Ecology

With the land-rich CALM campus, there are many opportunities to better manage natural resources, reduce energy usage, and conserve water. Although this is a dry region of the valley and state, storm water can still be managed on site through natural passive systems and landscapes. Power can be harvested via solar and wind. Water reclamation and treatment facilities can reduce potable water usage with habitats and other facilities. There are many opportunities to consider and even local partnerships to explore.

### Adventure Education

Education is such a key programmatic aspect to the CALM experience and mission. With multi-dimensional integrated thinking, spaces in and around an educational center and throughout the entire CALM campus can become dynamic learning places and experiences that connect back to the mission. These multi-use spaces, integrated into surrounding landscape areas, habitat edges, and unique places in buildings, provide more than "classrooms" – they create dramatic and immersive educational adventures with unique views and experiences that connect kids to animals, plants, and nature.

# Existing Campus



Key Map



## Legend

- Visitor Path
- Visitor Services Building
- Exhibit Building
- Viewer Shelter
- Animal Exhibit
- Holding Building
- Yard
- Service Path
- Admin / Support Building
- Buffer Vegetation
- Lawn
- Water
- Parking / Road

## APPROXIMATE LAND USE AREAS

|                              |            |
|------------------------------|------------|
| Overall Developed Campus     | 35.5 Acres |
| Bighorn Sheep Habitat        | 30,500 SF  |
| Cats of California Habitat   | 4,000 SF   |
| Raptor Habitat               | 4,100 SF   |
| Deer Habitat                 | 4,100 SF   |
| Coyote Habitat               | 2,000 SF   |
| Bear Habitat                 | 6,100 SF   |
| Shorebirds Habitat           | 21,000 SF  |
| Desert Habitat               | 1,500 SF   |
| Children's Park              | 11,700 SF  |
| Wildlife Rehab               | 8,800 SF   |
| Playground                   | 4,500 SF   |
| Reptile House                | 4,000 SF   |
| Amphitheater                 | 2,800 SF   |
| Gift Shop / CA Coast Room    | 4,300 SF   |
| North Service Yard           | 24,200 SF  |
| East Service Yard            | 36,300 SF  |
| West Service Yard            | 52,150 SF  |
| Staff Parking                | 37,350 SF  |
| Bighorn Service Yard         | 20,000 SF  |
| Visitor Parking              | 113,400 SF |
| Overflow Parking (not shown) | 343,500 SF |
| Restroom                     | 600 SF     |

Total Animal Habitat Land Use 97,800 SF / 10%



# Existing Campus - Site Images & Analysis



Existing Main Entry Gate



Mining Town



Desert Habitat



Bighorn Sheep Habitat



Cats of California



Mammal Round



Shorebirds Exhibit



Core of CALM Campus with Natural Shade Trees



Children's Park

# Campus Master Plan



Key Map

| APPROXIMATE LAND USE AREAS    |                  |
|-------------------------------|------------------|
| Overall Developed Campus      | 63.5 Acres       |
| Total Parking                 | 400,000 SF       |
| Total Animal Habitat Land Use | 565,675 SF / 20% |

Legend

Visitor Path

Visitor Services Building

Exhibit Building

Viewer Shelter

Animal Exhibit

Holding Building

Yard

Service Path

Admin / Support Building

Buffer Vegetation

Lawn

Water

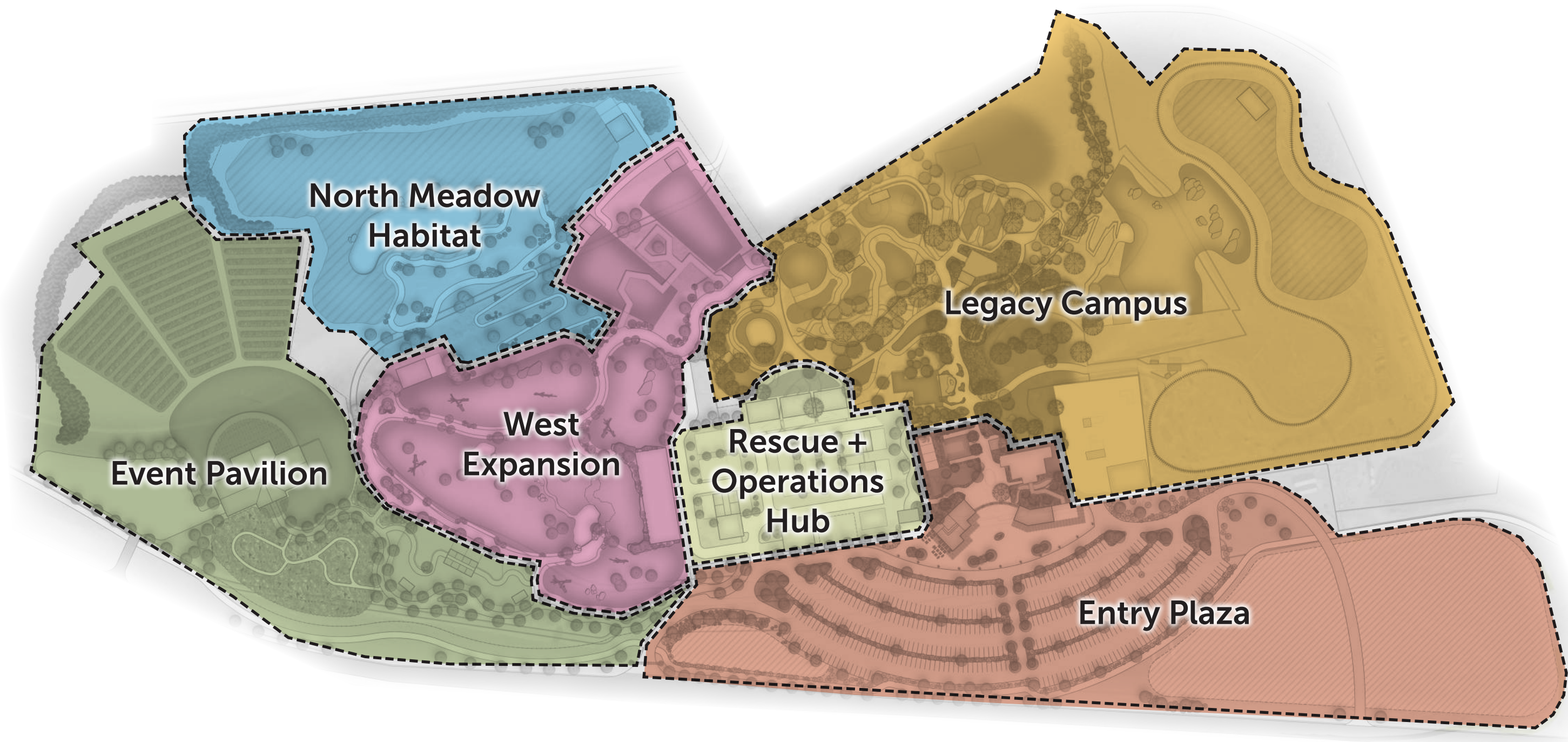
Parking / Road



# Master Plan Overview



# Project Zones



# Entry Plaza

By reorganizing the geometry of the parking lot and expanding the plaza, CALM’s improved entry experience will increase safety, boost revenue, and improve overall guest satisfaction.

## Key Concepts:

- Redevelop parking and overflow lots for ideal circulation geometry, visibility, and flow to the new entry gateway
- Improved landscape, sculpture, and signage. More evident gateway to the arrival drive.
- Easy car loop and guest drop-off
- Dedicated bus route, drop-off and direct Zoo entry for school groups
- New Entry Village including ticketing, guest services, gift, and second-level administrative offices
- Coffee shop / quick-service restaurant outside Zoo gates to capture passing bike traffic and boost revenue
- Repurpose the existing Entry Building as the Education Hub, including flexible classroom spaces, storage, and other programming needs
- New small-animal exhibit just after gateway

Program

|                            |          |
|----------------------------|----------|
| Gift Shop / Cafe / Admin   | 4,038 SF |
| Ticketing / Guest Services | 2,168 SF |
| Flex Habitat               | 3,930 SF |
| Temp Holding               | 1,650 SF |

Legend

|  |                           |
|--|---------------------------|
|  | Visitor Path              |
|  | Visitor Services Building |
|  | Exhibit Building          |
|  | Viewer Shelter            |
|  | Animal Exhibit            |
|  | Holding Building          |
|  | Yard                      |
|  | Service Path              |
|  | Admin / Support Building  |
|  | Buffer Vegetation         |
|  | Lawn                      |
|  | Water                     |
|  | Parking / Road            |



# Entry Plaza - Conceptual Rendering



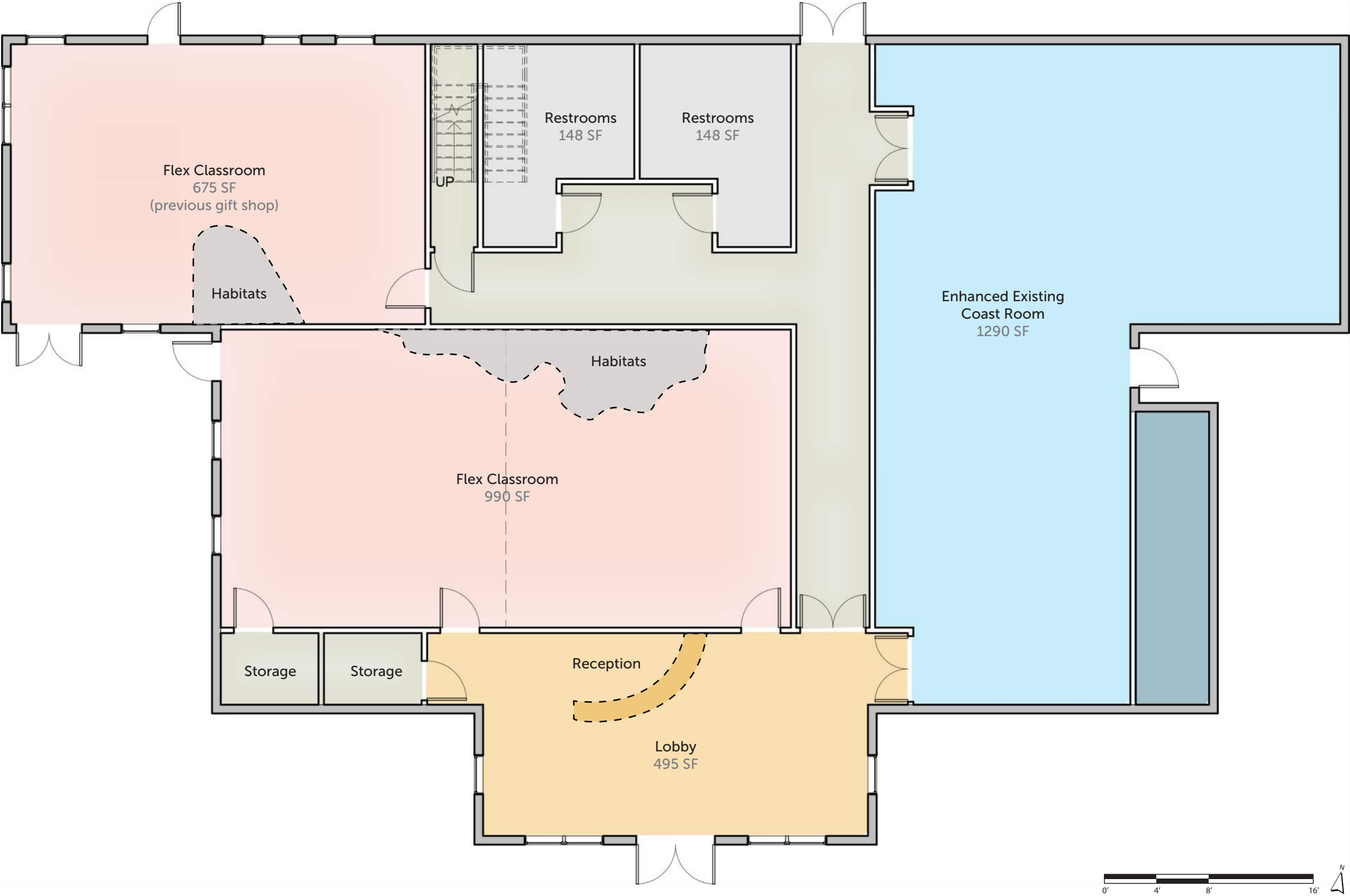
# Education Building Enhancements



Enhance/Expand the central space for classroom use and other special events



Maintain/Enhance the existing Coast Room



# Rehabilitation & Animal Operations Hub

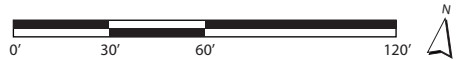
With an increased focus on CALM’s mission to rescue, rehabilitate and release local wildlife, it was important to develop a true Rescue and Animal Operations Hub to optimize its expanding animal care operations as well as showcase this important work to visitors.

### Key Concepts:

- New two-story commissary and animal quarantine building with intern housing above
- New OWCN under construction and step towards bolstering the facilities and operation
- Dedicated entry/exit to avoid animal drop-offs going through the main gate
- Larger/more outdoor yards with shade and natural substrates
- New indoor small animal (mammals, birds, etc.) holding and staff support facility, including outdoor yards for maximum flexibility
- New guest trail anchoring east side, can be part of everyday experience or (fee-based) behind the scenes tour

| Program                      |          |
|------------------------------|----------|
| Commissary                   | 4,146 SF |
| Quarantine                   | 4,146 SF |
| Rehab                        | 2,335 SF |
| Vet Support                  | 1,200 SF |
| Animal Holding               | 1,200 SF |
| Ambassador Animal Habitat    |          |
| Ambassador Animal Mews (x3)  | 3,575 SF |
| Large Mammal                 | 3,200 SF |
| Avian Yards                  | 3,200 SF |
| Quarantine Yards (x2)        | 1,062 SF |
| Rehab Yards (x2)             | 962 SF   |
| Flight Aviaries (x3)         | 3,000 SF |
| Vet Support Yards (x2)       | 1,107 SF |
| Animal Holding Yards (x2)    | 1,107 SF |
| Ambassador Animal Yards (x3) | 1,197 SF |

| Legend |                           |
|--------|---------------------------|
|        | Visitor Path              |
|        | Visitor Services Building |
|        | Exhibit Building          |
|        | Viewer Shelter            |
|        | Animal Exhibit            |
|        | Holding Building          |
|        | Yard                      |
|        | Service Path              |
|        | Admin / Support Building  |
|        | Buffer Vegetation         |
|        | Lawn                      |
|        | Water                     |
|        | Parking / Road            |



# Rehabilitation & Animal Operations Hub - Conceptual Rendering



# Legacy Campus

The defining strategy within the core historical campus focused on preserving its heritage and beautiful mature shade trees, while creating strategic zones throughout the campus that “stack” several components - such as shade, food and beverage, guest comfort (restrooms, seating, misters, etc.), views of animals and landscapes, and ideally, secondary/tertiary loop back trails so each hub is utilized multiple times.

| Program                           |            |
|-----------------------------------|------------|
| Habitats 1-6: Woodland Critters   | 35,000 GSF |
| Habitats 7-8: Aviary Enhancements | 4,500 GSF  |
| Habitats 9-11: Waterfowl/Riparian | 12,000 GSF |
| Event Space                       | 15,000 SF  |
| Existing Big Horn Sheep Habitat   | 23,000 SF  |
| Big Horn Sheep Habitat Expansion  | 20,000 SF  |
| Future Train Loop Habitat         | 50,000 SF  |
| Existing Cats of CA Habitats      | 4,000 GSF  |
| Existing Desert Habitat           | 1,500 SF   |
| New Snack Hub                     | 750 SF     |
| Central Hub Deck                  | 2,000 SF   |

| Legend |                           |
|--------|---------------------------|
|        | Visitor Path              |
|        | Visitor Services Building |
|        | Exhibit Building          |
|        | Viewer Shelter            |
|        | Animal Exhibit            |
|        | Holding Building          |
|        | Yard                      |
|        | Service Path              |
|        | Admin / Support Building  |
|        | Buffer Vegetation         |
|        | Lawn                      |
|        | Water                     |
|        | Parking / Road            |



**Key Projects:**

**Central Promenade**

A revamped central pathway enhances visitor comfort through the use of shade trees, garden edges, benches, misters, and more. Special paving creates hierarchy in the site’s circulation system

**Woodland Trail**

With the previous residents moved out to new, larger habitats, the northeast end of the Legacy Campus can be re-purposed to exhibit existing smaller collection animals in a more modern way, while incorporating “adventure education” through unique play features embedded into the landscape.

**Snack Hub**

A new visitor central hub with snack station and seating deck, overlooking central stream and ravine, as well as new habitats.

**Reptile Renovation**

The building shell of the Herpetarium is in decent condition and will benefit from an interior refit to modernize the exhibits inside with more varied enclosure sizes and even a peek-a-boo window into the life support systems for the waterfall exhibit outside.

**Bighorn Sheep Expansion**

By adjusting the barriers of the existing Bighorn Sheep exhibit, the visitor experience can be vastly improved through optimized sight-lines and more immersive viewing, and bringing the animals closer to the train tracks across the ravine for an exclusive train experience.

**Riparian Zone**

A refurbished riparian zone replaces the aging Shorebirds exhibit, and includes mixed species or flex habitats for birds and small mammals found within a riparian transect.



Snack Hub



Riparian Zone



Woodland Trail

# Legacy Campus Animals



**Bighorn Sheep**  
Legacy Campus



**Western Pond Turtle**  
Herp Building



**Golden Eagle**  
Aviaries



**Pronghorn**  
Train Loop  
New Animal



**Pelican**  
Riparian + Shorebirds



**American River Otter**  
Riparian  
New Animal



**Coot**  
Riparian + Shorebirds



**Egret**  
Riparian + Shorebirds



**American Badger**  
Woodland Trail



**Bobcat**  
Woodland Trail



**Gray Fox**  
Woodland Trail



**Raccoon**  
Woodland Trail

# West Expansion

This major new land use expansion to the west of the developed CALM Zoo site was designed in a way that compliments and supports the CALM mission and its natural landscape. Modern zoological habitats, animal welfare, and guest experiences through the use of rotational habitats, activity-based habitats, and immersive landscapes were all considered during the development of this zone. The main visitor path follows the ravine in the natural landscape, providing stunning vistas as the wolf and bear habitats rise up along either side.

| Program              |           |
|----------------------|-----------|
| Bear Holding         | 10,760 SF |
| Bear Tunnel Building | 4,5000 SF |
| Aviary 1 Barn        | 915 SF    |
| Aviary 2 Barn        | 915 SF    |
| Wolf Holding         | 2,380 SF  |
| Bear 1               | 84,500 SF |
| Bear 2               | 25,145 SF |
| Bear 3               | 22,630 SF |
| Aviary 1             | 18,826 SF |
| Aviary 2             | 21,133 SF |
| Wolf Ridge           | 36,450 SF |

| Legend |                           |
|--------|---------------------------|
|        | Visitor Path              |
|        | Visitor Services Building |
|        | Exhibit Building          |
|        | Viewer Shelter            |
|        | Animal Exhibit            |
|        | Holding Building          |
|        | Yard                      |
|        | Service Path              |
|        | Admin / Support Building  |
|        | Buffer Vegetation         |
|        | Lawn                      |
|        | Water                     |
|        | Parking / Road            |



Aviary and Canopy Walk



**Key Projects:**

**Wolf Ridge**

An elongated exhibit offers the chance to see a pack of wolves showcasing their natural behaviors as they run through the woods or

**Bear Flex Habitats**

New bear zone with expansive, immersive, and enriching habitats and opportunities to “flex” between brown and black bear

**Bear Tunnel**

A tunnel beneath the bear habitat provides an opportunity to get visitors underground and out of the heat, a key concern during the planning process. This cave experience showcases animals that require more temperature and light control, such as bats, ringtail cats, pocket gophers, reptiles, and/or various insects.

**Flight Aviaries**

By leveraging the site’s unique bluffs overlooking the Kern River, 200’ long aviaries provide enough space for raptor and California Condor flight. A parallel visitor deck takes advantage of the slope and allows for canopy level views of birds and vistas to the north with an enclosed walk-through segment.



Bear Flex Habitats



Wolf Ridge



Flight Aviaries

# West Expansion - Conceptual Rendering



# West Expansion Animals



**Cooper's Hawk**  
NW Aviaries



**Beaver**  
Bear Pond



**Black Bear**  
Flex Bear Habitats



**North American Brown Bear**  
Flex Bear Habitats  
New Animal



**Burrowing Owl**  
NW Aviaries



**California Condor**  
NW Aviaries



**Great Horned Owl**  
NW Aviaries



**Peregrine Falcon**  
NW Aviaries



**Red Tail Hawk**  
NW Aviaries



**Turkey Vulture**  
NW Aviaries



**Wolf**  
Wolf Ridge  
New Animal



**Miner Cat**  
Tunnel  
New Animal

# Event Pavilion

A new, multi-purpose event barn provides opportunities for expanded programming and rental revenue for CALM while celebrating the agricultural heritage of the region. Beautiful entry gardens offer an ideal location for photography sessions, and a large veranda overlooks the browse fields and animal habitats beyond. Relocating the contact farm to this area makes sense programmatically and creates opportunities for privatization during events.

Browse garden growing fields create a great backdrop and can provide browse enrichment for CALM’s animal collection, as well as an opportunity for special guest experiences (fee-based encounters for browse harvesting and animal feedings).



Flex-use Event Barn Look & Feel



Native Farm Gardens and Browse Fields  
Look & Feel

# Event Arrival Gardens Plants



**Clarika Amonea Aurora**



**Eschscholzia Californica Alba**



**Gilia Tricolor**



**Gilia Tricolor Bed**



**Phacelia Viscida**



**Nemophila Baby Blue Eyes**



**Nemophila Menziesii  
Snow White**



**Playstemon Californicus**

# North Meadow Habitat

The North Meadow utilizes the site’s naturally flat plains to create an expansive mixed species habitat that could feature Tule Elk, Mule Deer, White-Tail Deer, and possibly even Bison. With enough space to spread out and roam, these species could successfully cohabitate while providing visitors with a true environmental transect view of a central Californian plain.

### Key Concepts:

- Meadow trail down the bluff offers an adventure experience for guests willing to make the trek, while a funicular could provide a more accessible option
- Central pond provides an element of habitat theater for guests as various species utilize this landscape feature
- Animal pens and shelters on the northeast end of the exhibit for animal husbandry and easy access to service roads
- Vegetated buffer to control sight lines of reservoir beyond



| Program |            |
|---------|------------|
| Holding | 1,587 SF   |
| Yards   | 1,587 SF   |
| Habitat | 157,380 SF |

| Legend |                           |
|--------|---------------------------|
|        | Visitor Path              |
|        | Visitor Services Building |
|        | Exhibit Building          |
|        | Viewer Shelter            |
|        | Animal Exhibit            |
|        | Holding Building          |
|        | Yard                      |
|        | Service Path              |
|        | Admin / Support Building  |
|        | Buffer Vegetation         |
|        | Lawn                      |
|        | Water                     |
|        | Parking / Road            |

# North Meadow Animals



**Tule Elk**  
North Meadow



**Bison**  
North Meadow



**Mule Deer**  
North Meadow

# Implementation



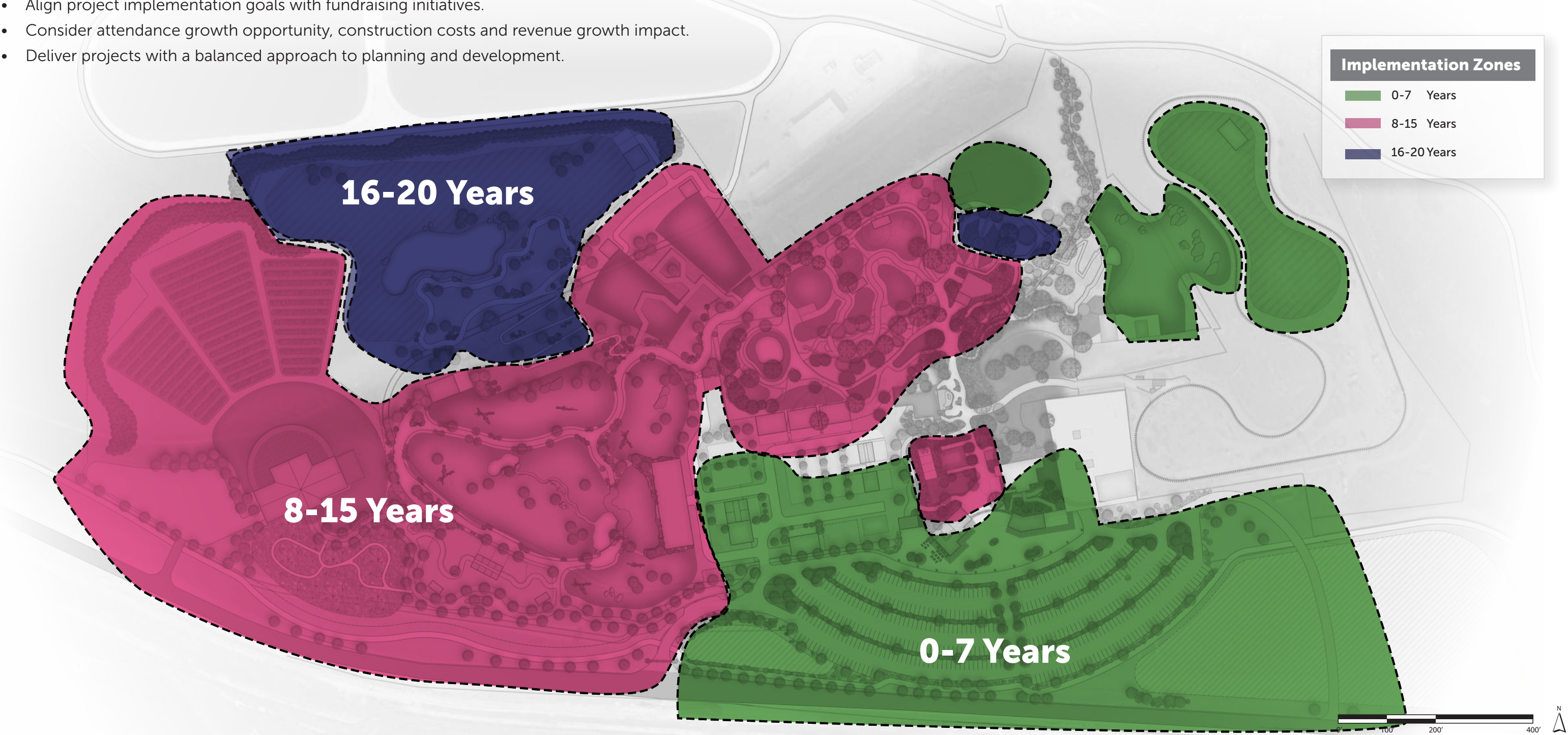
This page intentionally left blank

# Implementation Overview

The implementation plan was developed to address the Zoo’s most critical needs including animal welfare, guest experience, revenue generation, and infrastructure while proposing a feasible sequence relative to funding and operations. This plan is ambitious and includes several new project concepts that will be implemented over the next twenty years and beyond. To move forward successfully, the Zoo must act strategically based on the following recommended criteria:

- Align project implementation goals with fundraising initiatives.
- Consider attendance growth opportunity, construction costs and revenue growth impact.
- Deliver projects with a balanced approach to planning and development.

The balanced approach to planning and development focuses on the programmatic needs of the Zoo and categorizes projects in to three distinct categories such as exhibits and attractions, strategic services, and infrastructure. Each category is vital to the long term physical and financial stability of the campus and needs to be addressed throughout the planning and implementation process



# 0-7 Years

CALM’s immediate priorities within the next seven years will be Phase 1 of the Rehab & Operations hub, the Entry Plaza and Parking, as well as expanding the Bighorn sheep exhibit.

## Entry Zone

- ① New parking and vehicular circulation
- ② Entry Plaza
- ③ Guest Services & Ticketing Building
- ④ Gift Shop, Cafe, & Admin Building
- ⑤ Renovation of the Education Building
- ⑥ Rehab Entry Gateway

## Animal Operations & Rehab Hub

- ⑦ Commissary Building with indoor quarantine and 2nd floor intern housing
- ⑧ Rehab Building
- ⑨ Veterinary Support Building
- ⑩ Animal Holding Building
- ⑪ Flight Aviaries
- ⑫ Large Mammal Yards
- ⑬ Avian Yards

## Other Projects

- ⑭ Bighorn Sheep Expansion
- ⑮ Future Exhibit
- ⑯ Event Space



# 8-15 Years

CALM’s intermediate priorities will focus on expanding the campus to the west and providing exciting new exhibits, experiences, and revenue opportunities.

## Legacy Campus

- ① Small Mammal Habitat
- ② Amphitheater Renovation
- ③ Snack Hub
- ④ Ambassador Animal Mews and habitat

## Woodland Trails Habitats

- ⑤ 5 new small mammal exhibits
- ⑥ Renovated existing bear habitat

## Riparian Habitats

- ⑦ Renovation of existing Shorebirds exhibit
- ⑧ 2 new small mammal / riparian exhibits

## West Expansion

- ⑨ 2 Flight Aviaries
- ⑩ 3 Flex Bear Habitats & Support Barn
- ⑪ Wolf Ridge Habitat & Support Barn

## Event Pavilion

- ⑫ Event Pavilion, Decks, & Lawns
- ⑬ Contact Farm
- ⑭ Native Plant Garden
- ⑮ Browse Fields



# 16-20 Years

CALM's later priorities will include an expansive meadow habitat , as well as the refurbishment of existing and addition of new aviaries.

## North Meadow Habitat

- ① Meadow Trail
- ② Pond
- ③ Animal Barn & Yards

## Northeast Aviaries

- ④ Existing Aviary Renovation
- ⑤ Additional Aviaries

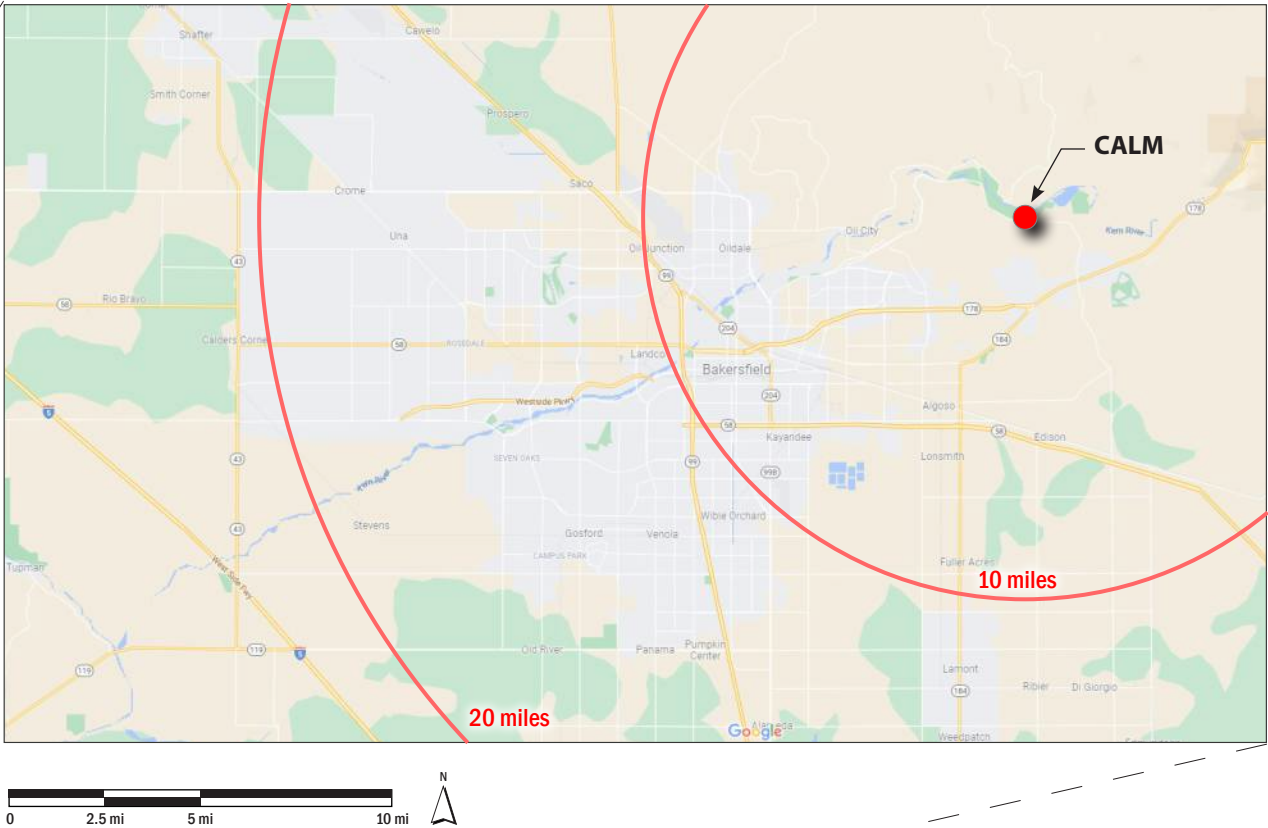
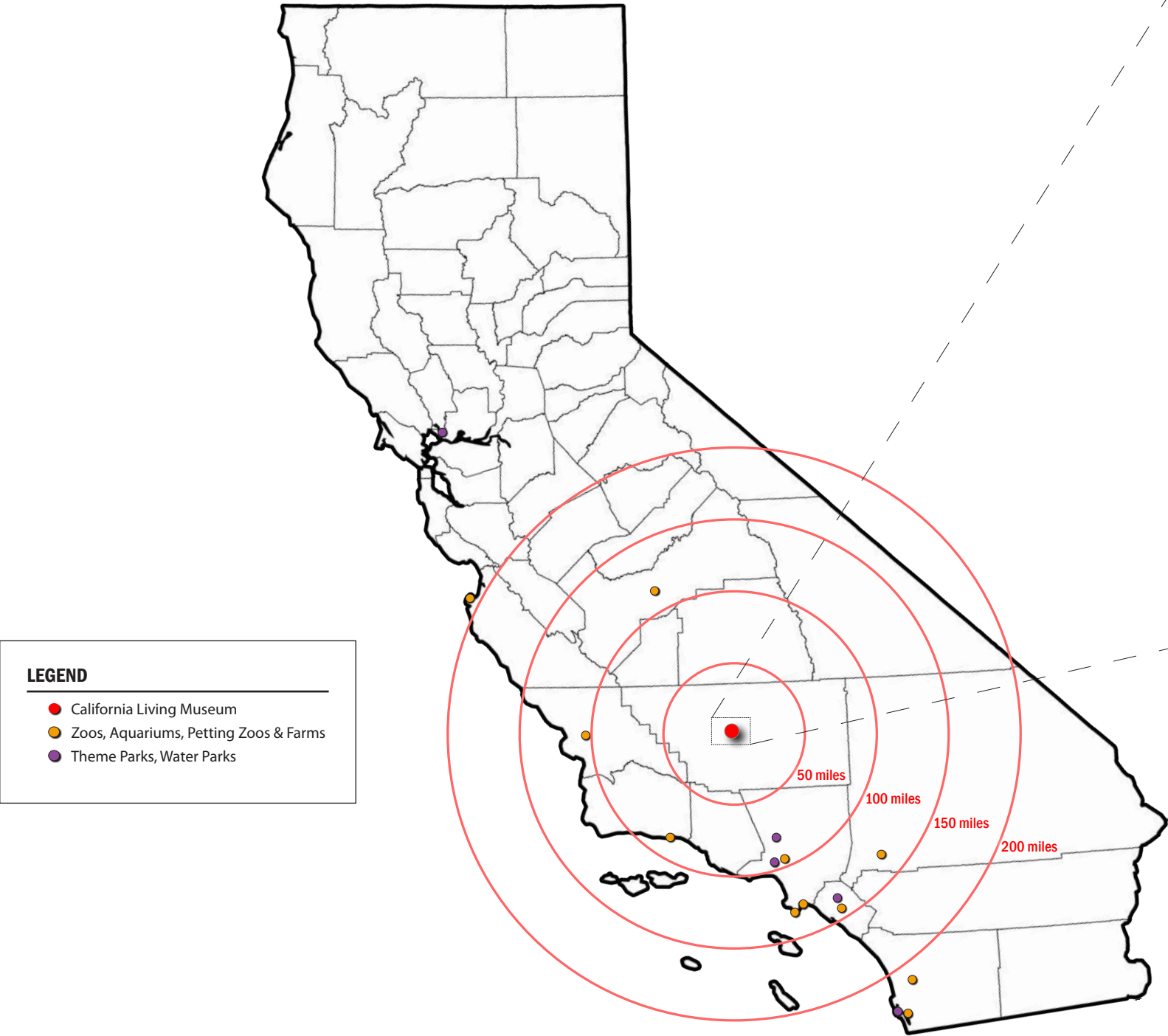


# Appendix



# State & Local Context

Situated nearly equidistant between the LA Zoo and Fresno Chaffee Zoo at just over a 100-mile drive from each, CALM has an opportunity to become a destination attraction with a unique focus on the ecosystems found in California and the greater Southwest. In conjunction with its extensive wildlife rehabilitation program, CALM serves as a key conservation education institution for the local Bakersfield and Southern San Joaquin Valley community.



| NEIGHBORING ATTRACTIONS     |           |
|-----------------------------|-----------|
| Six Flags Magic Mountain    | 92 miles  |
| Universal Studios Hollywood | 116 miles |
| Los Angeles Zoo             | 118 miles |
| Fresno Chaffee Zoo          | 123 miles |
| Charles Paddock Zoo         | 134 miles |
| Cabrillo Marine Aquarium    | 150 miles |
| Aquarium of the Pacific     | 150 miles |
| Disneyland                  | 150 miles |
| Santa Ana Zoo               | 160 miles |
| Big Bear Alpine Zoo         | 182 miles |
| Monterey Bay Aquarium       | 235 miles |
| SeaWorld San Diego          | 242 miles |
| San Diego Zoo               | 244 miles |
| San Diego Zoo Safari Park   | 245 miles |
| Six Flags Discovery Kingdom | 310 miles |

# CALM Site

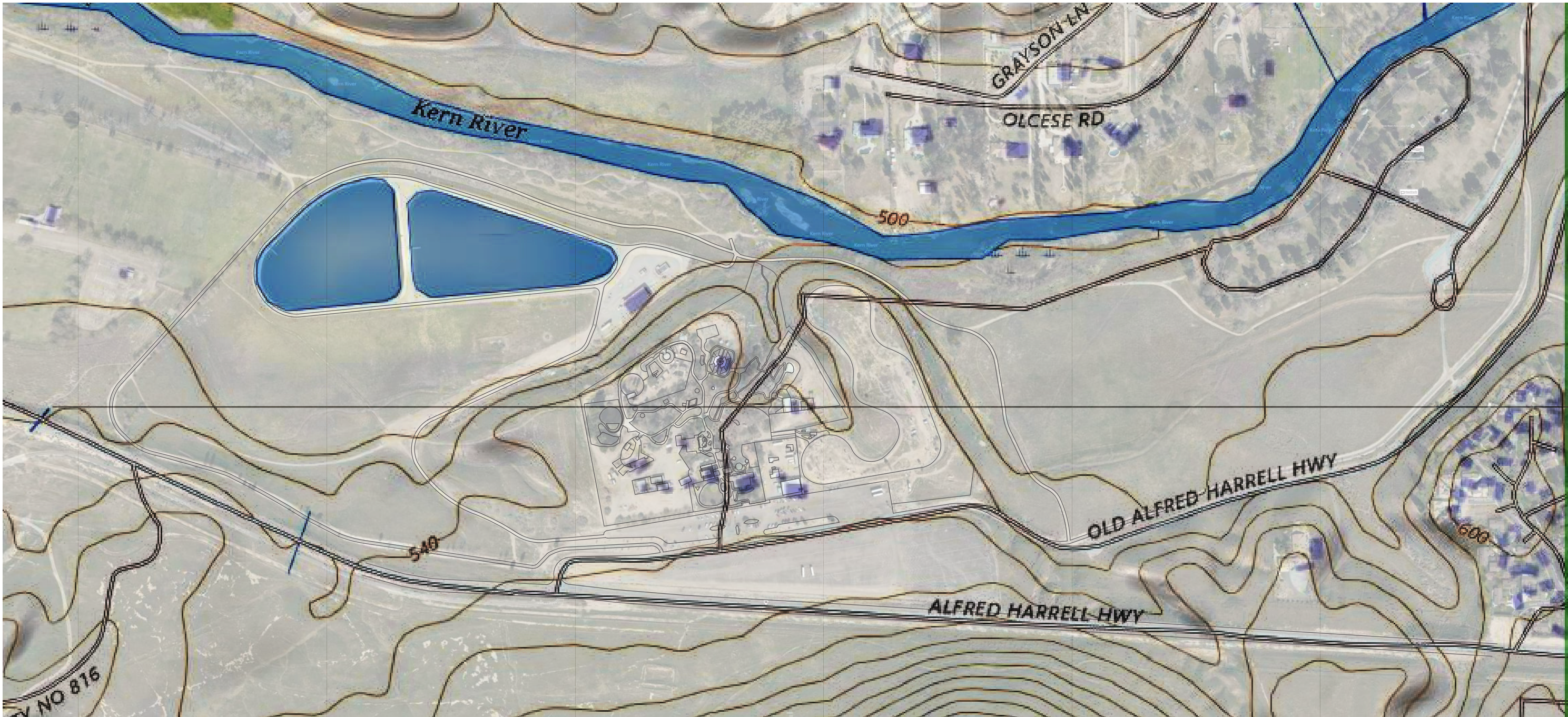
West Parcel

Main Parcel

East Parcel



# Inventory & Analysis - Site Topography



West to East Land Form Section



# Inventory & Analysis - Existing Conditions Plan



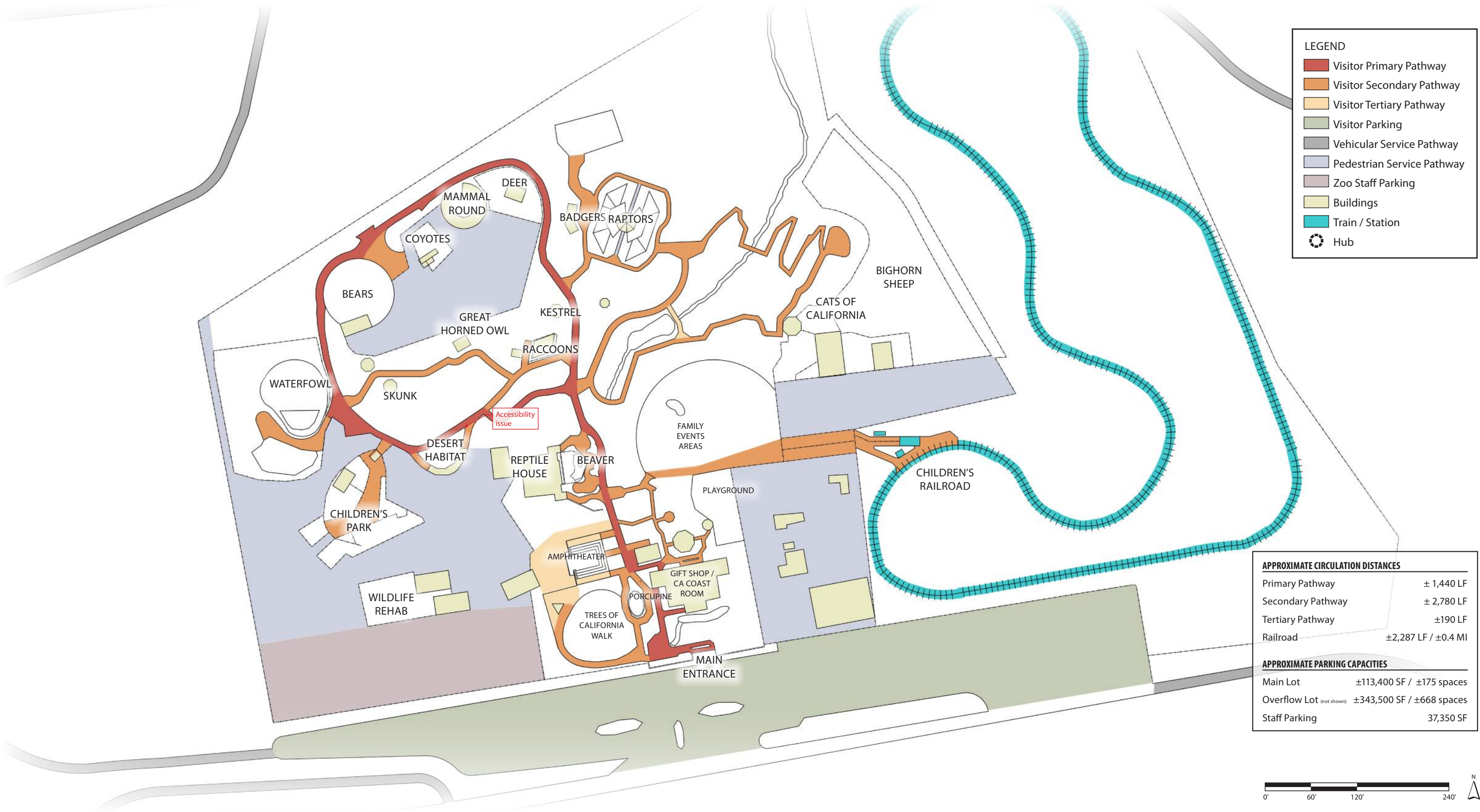
## Legend

- Visitor Path
- Visitor Services Building
- Exhibit Building
- Viewer Shelter
- Animal Exhibit
- Holding Building
- Yard
- Service Path
- Admin / Support Building
- Buffer Vegetation
- Lawn
- Water
- Parking / Road

## APPROXIMATE AREA TAKEOFFS

|                              |            |
|------------------------------|------------|
| Bighorn Sheep Habitat        | 30,500 SF  |
| Cats of California Habitat   | 4,000 SF   |
| Raptor Habitat               | 4,100 SF   |
| Deer Habitat                 | 4,100 SF   |
| Coyote Habitat               | 2,000 SF   |
| Bear Habitat                 | 6,100 SF   |
| Waterfowl Habitat            | 21,000 SF  |
| Desert Habitat               | 1,500 SF   |
| Children's Park              | 11,700 SF  |
| Wildlife Rehab               | 8,800 SF   |
| Playground                   | 4,500 SF   |
| Reptile House                | 4,000 SF   |
| Amphitheater                 | 2,800 SF   |
| Gift Shop / CA Coast Room    | 4,300 SF   |
| North Service Yard           | 24,200 SF  |
| East Service Yard            | 36,300 SF  |
| West Service Yard            | 52,150 SF  |
| Staff Parking                | 37,350 SF  |
| Bighorn Service Yard         | 20,000 SF  |
| Visitor Parking              | 113,400 SF |
| Overflow Parking (not shown) | 343,500 SF |
| Restroom                     | 600 SF     |

# Inventory & Analysis - Circulation



# Inventory & Analysis - Habitat Land Use



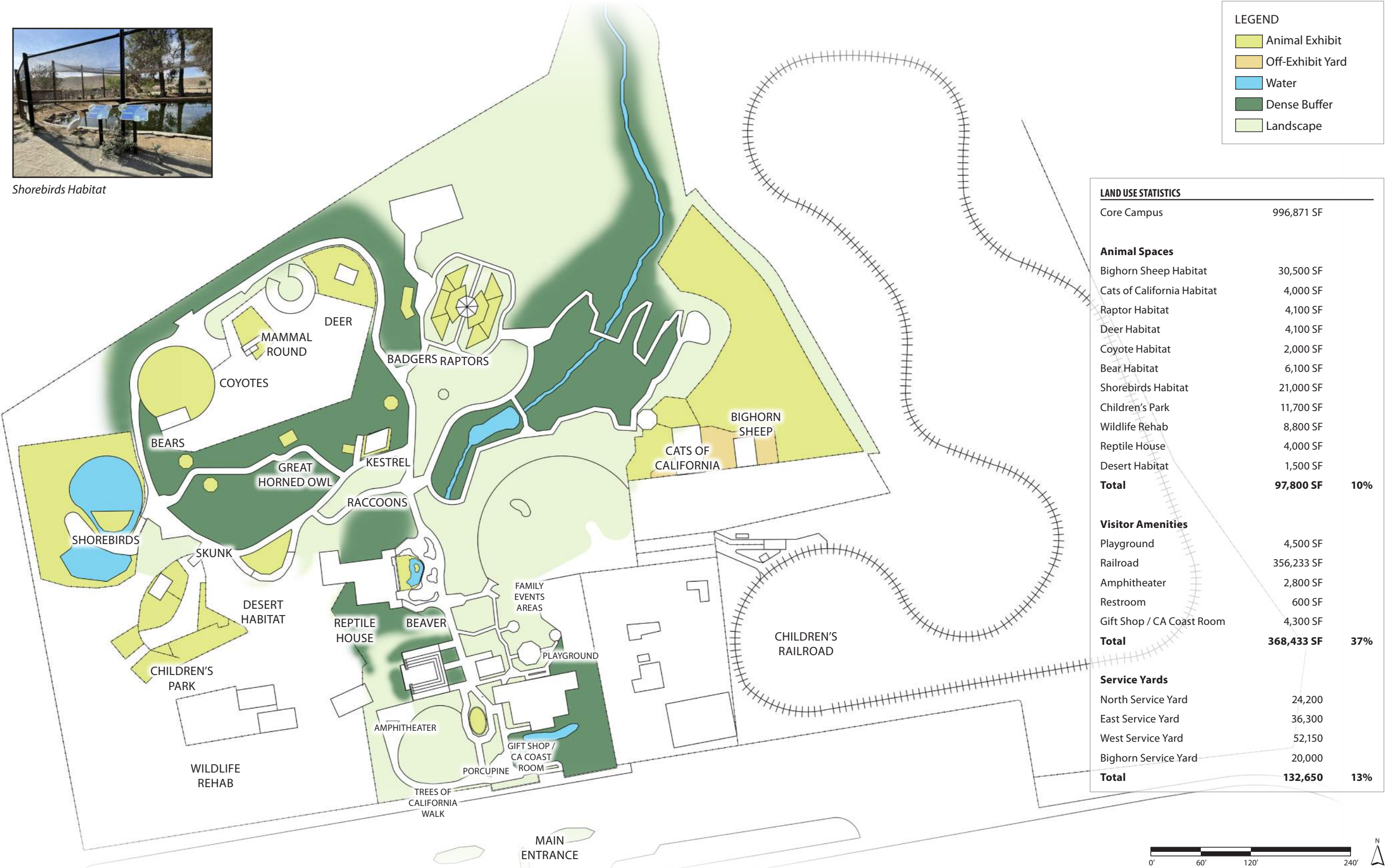
Bighorn Sheep Habitat



Shorebirds Habitat



Cats of California



LEGEND

- Animal Exhibit
- Off-Exhibit Yard
- Water
- Dense Buffer
- Landscape

| LAND USE STATISTICS        |                   |            |
|----------------------------|-------------------|------------|
| Core Campus                | 996,871 SF        |            |
| <b>Animal Spaces</b>       |                   |            |
| Bighorn Sheep Habitat      | 30,500 SF         |            |
| Cats of California Habitat | 4,000 SF          |            |
| Raptor Habitat             | 4,100 SF          |            |
| Deer Habitat               | 4,100 SF          |            |
| Coyote Habitat             | 2,000 SF          |            |
| Bear Habitat               | 6,100 SF          |            |
| Shorebirds Habitat         | 21,000 SF         |            |
| Children's Park            | 11,700 SF         |            |
| Wildlife Rehab             | 8,800 SF          |            |
| Reptile House              | 4,000 SF          |            |
| Desert Habitat             | 1,500 SF          |            |
| <b>Total</b>               | <b>97,800 SF</b>  | <b>10%</b> |
| <b>Visitor Amenities</b>   |                   |            |
| Playground                 | 4,500 SF          |            |
| Railroad                   | 356,233 SF        |            |
| Amphitheater               | 2,800 SF          |            |
| Restroom                   | 600 SF            |            |
| Gift Shop / CA Coast Room  | 4,300 SF          |            |
| <b>Total</b>               | <b>368,433 SF</b> | <b>37%</b> |
| <b>Service Yards</b>       |                   |            |
| North Service Yard         | 24,200            |            |
| East Service Yard          | 36,300            |            |
| West Service Yard          | 52,150            |            |
| Bighorn Service Yard       | 20,000            |            |
| <b>Total</b>               | <b>132,650</b>    | <b>13%</b> |

# Inventory & Analysis - Current Collection Plan

## Ecoregional Representation

MAMMALS

MEDITERRANEAN

Coyote

Coati

Black Bear

Red Fox

American Beaver

Black Tailed Mule Deer

Badger

Opossum

Fisher

Raccoon

Gray Fox

Ringtail Cat

Mountain Lion

Striped Skunk

Porcupine

Bobcat

Island Fox

MONTANE

Coyote

Coati

Black Bear

Red Fox

American Beaver

Black Tailed Mule Deer

Badger

Opossum

Fisher

Raccoon

Gray Fox

Striped Skunk

Mountain Lion

Bobcat

Porcupine

DESERT

Coyote

Black Tailed Mule Deer

Black Bear

Raccoon

American Beaver

Striped Skunk

Badger

Bobcat

Gray Fox

Mountain Lion

Porcupine

BIRDS

MEDITERRANEAN

Acorn Woodpecker

Red Tailed Hawk

Bald Eagle

Western Screech Owl

Canada Goose

Barn Owl

Great Blue Heron

Cooper's Hawk

Mallard

Greater Egret

Rose-ringed Parakeet

Great Horned Owl

Western Scrub Jay

Osprey

Golden Eagle

Crow

Western Gull

Black Crowned Night Heron

American Coot

Burrowing Owl

American Kestrel

Red Shouldered Hawk

American Robin

Herring Gull

American White Pelican

Green Heron

Steller's Jay

Turkey Vulture

MONTANE

Acorn Woodpecker

Red Tailed Hawk

Bald Eagle

Western Screech Owl

Canada Goose

Barn Owl

Great Blue Heron

Cooper's Hawk

Mallard

Greater Egret

Rose-ringed Parakeet

Great Horned Owl

Western Scrub Jay

Osprey

Golden Eagle

Crow

American Coot

Black Crowned Night Heron

American Kestrel

Burrowing Owl

American Robin

Ferruginous Hawk

Steller's Jay

Red Shouldered Hawk

Green Heron

California Condor

Turkey Vulture

DESERT

Acorn Woodpecker

Red Tailed Hawk

Bald Eagle

Western Screech Owl

Rose-ringed Parakeet

Barn Owl

Western Scrub Jay

Cooper's Hawk

Golden Eagle

Great Horned Owl

American Kestrel

Osprey

American Robin

Crow

Roadrunner

Burrowing Owl

Turkey Vulture

Ferruginous Hawk

Red Shouldered Hawk

REPTILES

DESERT

Desert Tortoise



